

JAWAPAN KERTAS 2 SET 3

1. $x = 3, y = -4$; $x = -\frac{1}{2}, y = 3$

2. (a)

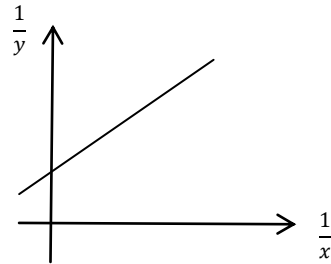
$\frac{1}{y}$	1.04	0.83	0.71	0.50	0.45	0.33
$\frac{1}{x}$	0.67	0.5	0.4	0.25	0.2	0.1

(b) Graf

(c) (i) $\frac{1}{\lambda} = y - \text{intercept}$
 $= 0.2$
 $\lambda = 5$

(ii) $-\frac{\mu}{\lambda} = \text{gradient}$

$\mu = -6.25$



3. (a) $x = 130, y = 12.40, z = 25$

(b) (i) 119

(ii) RM19.66

(c) 142.8

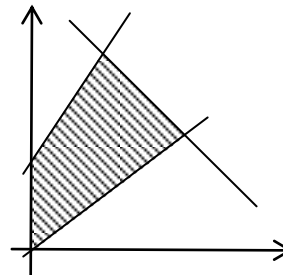
4. (a) (I) $x + y \leq 120$
 (II) $y \geq \frac{1}{2}x$
 (III) $y \leq x + 40$

(b) Graf

(c) (i) Using straight line $y = 50, x = 10$

(ii) (80,40)

$k = 150(80) + 100(40)$
 $= \text{RM } 16\,000.00$



5. (a) $\frac{27}{2}$ @ 13.5

(b) R $(\frac{18}{5}, \frac{12}{5})$

(c) (i) $3x^2 + 3y^2 - 66x - 38y + 434 = 0$

(ii) $b^2 - 4ac = -3764 < 0$, do not intersect y-axis.

6. (a) (i) $-2y + 4x$ (ii) $3x + y$

(b) $\sqrt{180}$ @ $6\sqrt{5}$ @ 13.42